

MY LONDON PIP GEE-MERRETT



London is an amazing place. Each former village and region has managed to retain its character, distinct from its neighbours in a myriad of ways and it's often difficult to put your finger on what is different; it's more of a feeling.

The glamour of Mayfair, the gentility of Belgravia, the wealth of Knightsbridge, the drive of the City and the hubbub of Soho.

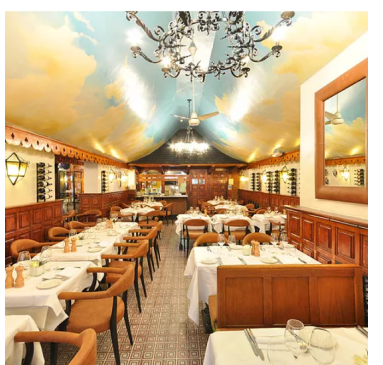
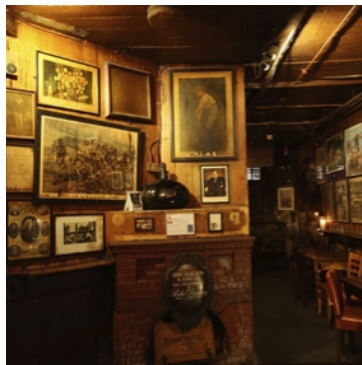
A great place to work. I love the buzz of the Carnaby Estate, busy from early morning until late in the evening. It's bright, bustling and eclectic with such a positive atmosphere.

I have an enduring affection for the City, the first place I worked in the days when everything shut at 9 pm! Some quite beautiful buildings and a constant hum of activity.

I've watched the South Bank transform itself from an unloved and rather unkempt area to a recognised commercial and residential destination.

Borough Market is now an internationally recognised food hub and the days when we used to run past the arches by Southwark Cathedral on the way to the Old Thameside Inn, convinced a new Jack the Ripper was lurking in the gloom and mist, are now long gone.

It's hard to select individual properties, but The Wolseley, Piccadilly has got to be favourite, as has the Revolution on Leadenhall Street. With lofty ceilings and period features, they are such stunning properties.



Gordon's Wine bar on Villiers Street had me hooked from the day I met its charismatic owner nearly 20 years ago. Despite its tortuous layout with a vaulted ceiling that I consistently banged my head on, I quickly became, and remain, fiercely protective of it.

And despite it making me feel incredibly old, I've a lasting fondness for La Zia Teresa on Hans Road, which was one of the first restaurant properties I ever dealt with and where the atmosphere hasn't changed in over 25 years!



**Pip is a Director in the Lease Advisory team at Davis Coffey Lyons.
She has been advising landlords and tenants across London for 30 years.**